



chime flash

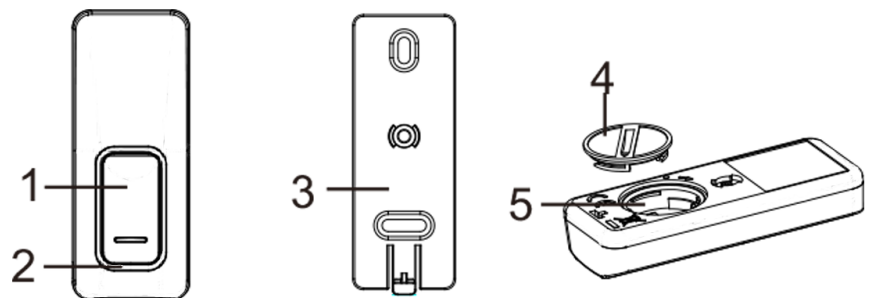
Doorbell Push Transmitter

Introduction

The chime flash Doorbell Push is a replacement or extra push that will pair to your chime flash receiver unit.

Product Overview

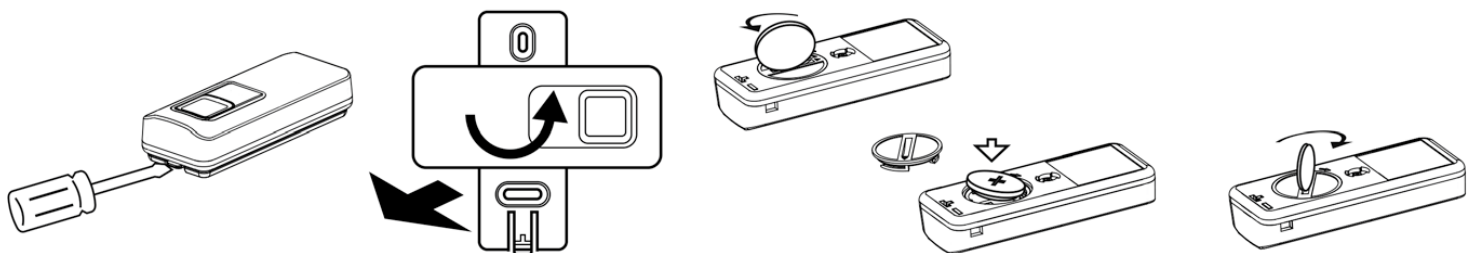
- 1) Push Button
- 2) Push Indicator
- 3) Mounting Bracket
- 4) Battery Cover
- 5) Battery Compartment



Installation

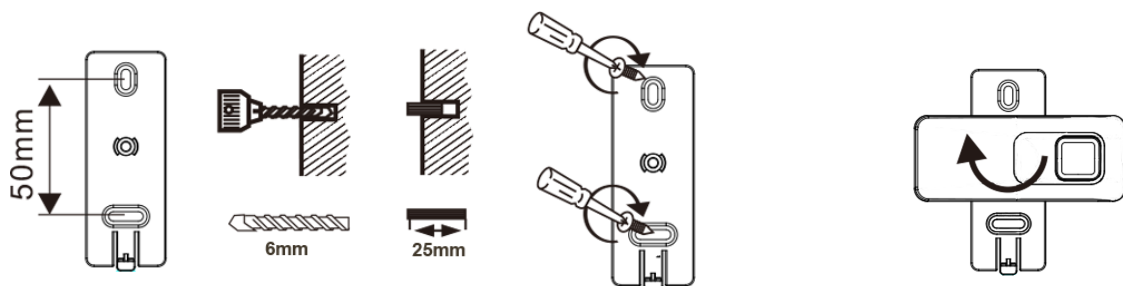
Push the locking tab slightly away from the transmitter and turn the wall bracket on the underside of the transmitter 90° to the plate. The bellpush can now be removed (pulled away) from the plate.

Insert the supplied CR2032 battery as shown (Positive side upwards).



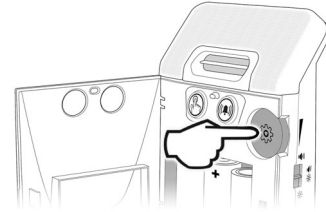
We recommend attaching the bellpush mounting plate to your door or frame using the sticky pad already attached. The provided screws and plugs can be used for fixing the bellpush to masonry.

The Bellpush should be fitted to the mounting plate at a 90 degree angle and then rotated either clockwise or anti-clockwise until a click is heard.

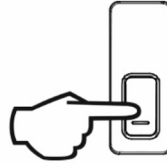


Programming & Setup

1) Press & hold the setup button for 2-3 seconds, the green doorbell symbol will illuminate and flash at a steady rate.



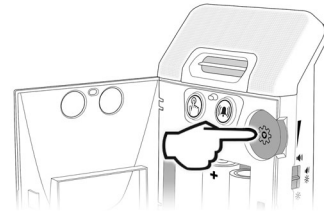
2) Press the bellpush button, the green symbol on the receiver will flash rapidly for 1 second and a single beep will be heard, this indicates that the bellpush and receiver are now paired.



Melody Selection

There are 4 doorbell melodies and 2 telephone melodies to choose from.

Press and hold the setup button for 2-3 seconds to enter setup mode, the green symbol will steadily flash. Release the setup button.



If this is the symbol you would like to change the melody of then simply rotate the setup button until you hear the sound you wish to keep. If you wish to change the sound on the orange symbol press the setup button once, the bell symbol will flash and follow the instructions above.



Once the desired melody is selected press the setup button to exit the setup mode.



Sarabec Ltd
15 High Force Road
Middlesbrough
United Kingdom
TS2 1RH
Telephone: 01642 247789
email: mail@sarabec.co.uk
website: www.sarabec.com
Full system instructions available on our website.
This item carries a 1 year guarantee, please contact your point of sale in the event of any issues.

Sarabec Ltd declares that chimeflash complies with all relevant UK Statutory Instruments.

Sarabec Ltd declares that chimeflash complies with all relevant EU directives.

Sarabec's EU authorised representative: HUMANTECHNIK GmbH, Im Wörth 25, D-79576 Weil am Rhein, Germany.

The full declaration of conformity for the Chimeflash is available from Sarabec Ltd.

The Wheelie bin logo is the industry wide symbol for this type of product. The symbol, when appearing on electronic product, indicates that the item should NOT be treated as ordinary household waste when due for disposal.

