



chime flash

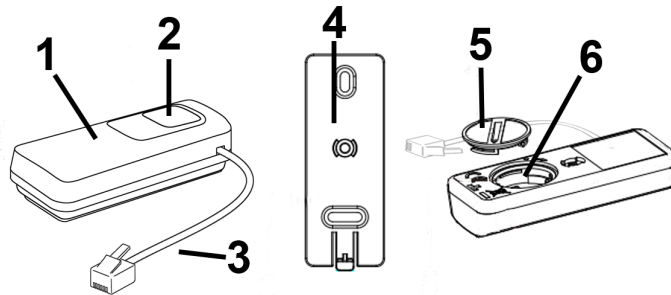
Telephone Transmitter

Introduction

The chime flash Telephone transmitter will allow you to be alerted when your telephone is ringing via extra loud sounds, ultra-bright flashing LED's and colored indicators on your chime flash receiver.

Product Overview

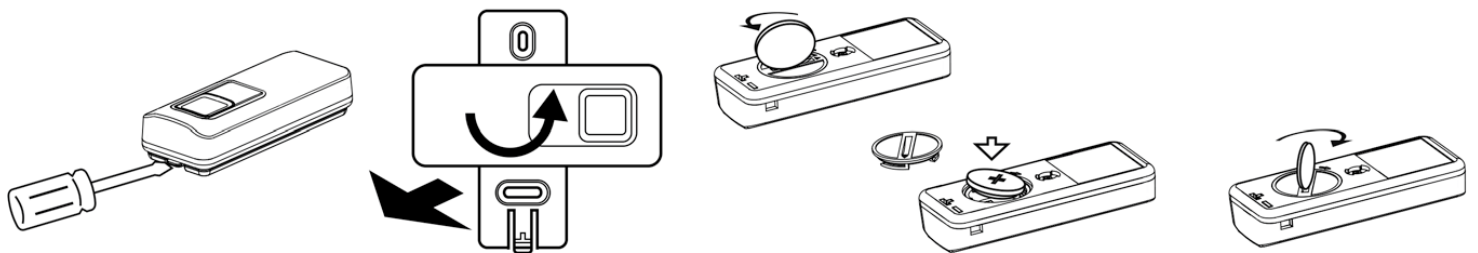
- 1) Indicator (Orange)
- 2) Test Button
- 3) Telephone Cable
- 4) Mounting Plate
- 5) Battery Cover
- 6) Battery Compartment



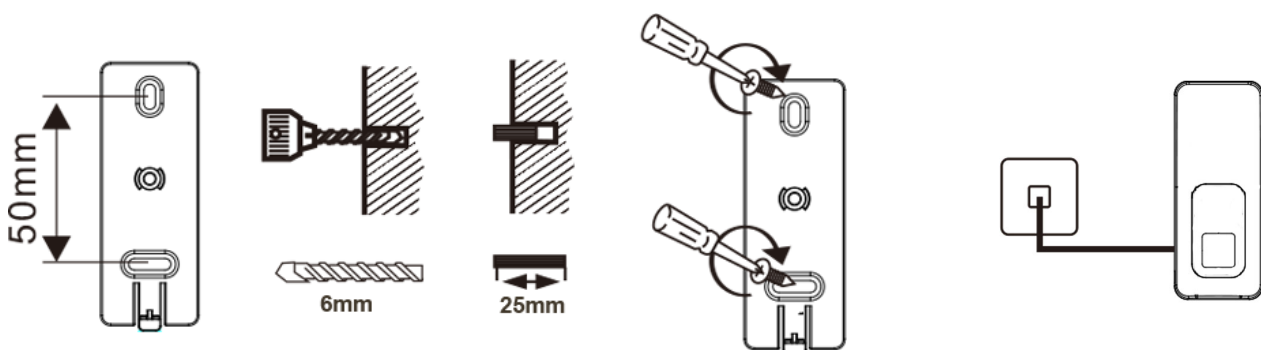
Installation

Push the locking tab slightly away from the transmitter and turn the wall bracket on the underside of the transmitter 90° to the plate. The transmitter can now be removed (pulled away) from the plate.

Insert the supplied CR2032 battery as shown (Positive side upwards).

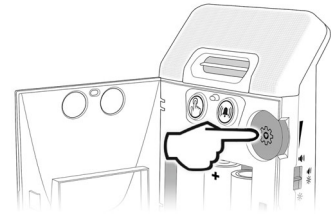


The mounting plate should be fixed next to the telephone socket using the adhesive pad on the rear of the plate, or by using plugs and screws. Ensure that the transmitter is close enough to the BT socket so that the cable can plug in. Attach the Transmitter to the plate & plug in the telephone cable.

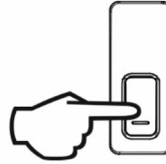


Programming & Setup

1) Press & hold the setup button for 2-3 seconds, the green doorbell symbol will illuminate and flash at a steady rate. Press the setup button again to move to the orange bell symbol.



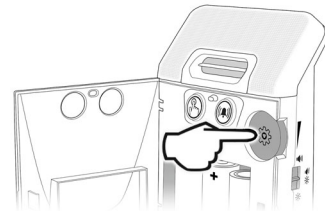
2) Press the transmitter test button, the orange symbol on the receiver will flash rapidly for 1 second and a single beep will be heard, this indicates that the bellpush and receiver are now paired.



Melody Selection

There are 4 doorbell melodies and 2 telephone melodies to choose from.

Press and hold the setup button for 2-3 seconds to enter setup mode, the green symbol will steadily flash. Release the setup button.



If this is the symbol you would like to change the melody of then simply rotate the setup button until you hear the sound you wish to keep. If you wish to change the sound on the orange symbol press the setup button once, the bell symbol will flash and follow the instructions above.



Once the desired melody is selected press the setup button to exit the setup mode.



Sarabec Ltd
15 High Force Road
Middlesbrough
United Kingdom
TS2 1RH
Telephone: 01642 247789
email: mail@sarabec.co.uk
website: www.sarabec.com
Full system instructions available on our website.

This item carries a 1 year guarantee, please contact your point of sale in the event of any issues.

Sarabec Ltd declares that chimeflash complies with all relevant UK Statutory Instruments.

Sarabec Ltd declares that chimeflash complies with all relevant EU directives.

Sarabec's EU authorised representative: HUMANTECHNIK GmbH, Im Wörth 25, D-79576 Weil am Rhein, Germany.

The full declaration of conformity for the Chimeflash is available from Sarabec Ltd.

The Wheelie bin logo is the industry wide symbol for this type of product. The symbol, when appearing on electronic product, indicates that the item should NOT be treated as ordinary household waste when due for disposal.



Chimeflash Telephone Tx Issue 1 May 2021