



chime flash

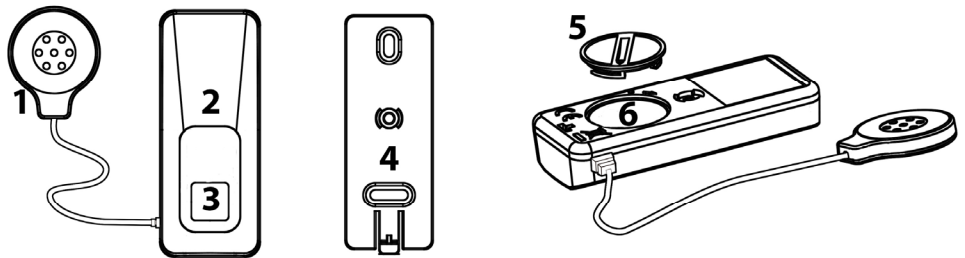
Sound Sensor

Introduction

The chime flash Sound Sensor will attach to any device which emits a loud repeating sound such as a doorbell, door entry system or alarm unit. It will send a wireless signal to the chime flash receiver which will alert you via extra loud sounds, ultra-bright flashing LED's and colored indicators.

Product Overview

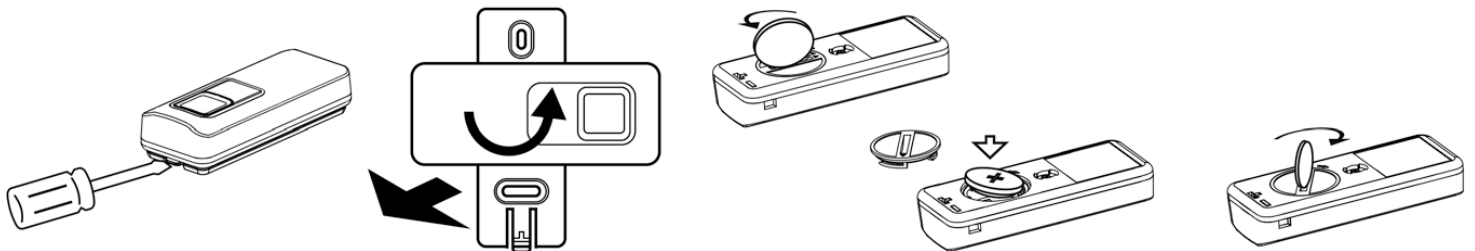
- 1) Acoustic Sensor
- 2) Indicator (Orange)
- 3) Test Button
- 4) Mounting Plate
- 5) Battery Cover
- 6) Battery Compartment



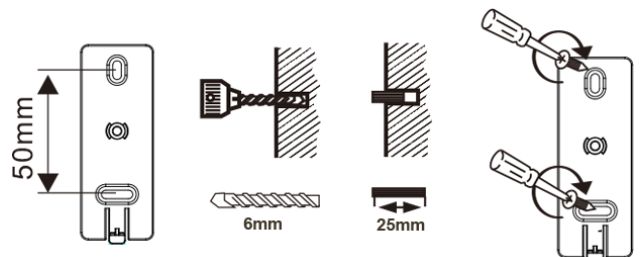
Installation

Push the locking tab slightly away from the transmitter and turn the wall bracket on the underside of the transmitter 90° to the plate. The transmitter can now be removed (pulled away) from the plate.

Insert the supplied CR2032 battery as shown (Positive side upwards).



The mounting plate should be fixed next to the audio device you would like to be alerted to using the adhesive pad on the rear of the plate, or by using plugs and screws.



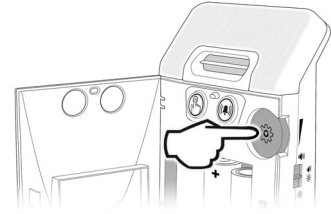
Attach the Transmitter to the plate.

Hold the acoustic sensor on the device you would like to be alerted to (ensuring the acoustic sensor holes point towards the device) and test to confirm the sound of the connected device triggers the receiver.

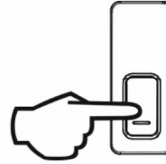
When you find the best position, attach the acoustic sensor using sticky tape roundels or Velcro roundels provided. Use the Velcro roundels when attaching to an uneven surface

Programming & Setup

1) Press & hold the setup button for 2-3 seconds, the green doorbell symbol will illuminate and flash at a steady rate. Press the setup button again to move to the orange bell symbol.



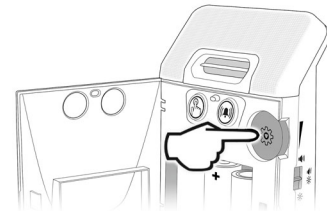
2) Press the transmitter test button, the orange symbol on the receiver will flash rapidly for 1 second and a single beep will be heard, this indicates that the bellpush and receiver are now paired.



Melody Selection

If you wish to change the Melody:

Press and hold the setup button for 2-3 seconds to enter setup mode, the green symbol will steadily flash. Release the setup button.



If this is the symbol you would like to change the melody of then simply rotate the setup button until you hear the sound you wish to keep. If you wish to change the sound on the orange symbol press the setup button once, the bell symbol will flash and follow the instructions above.



Once the desired melody is heard press the setup button to exit the setup mode.



Sarabec Ltd
15 High Force Road
Middlesbrough
United Kingdom
TS2 1RH
Telephone: 01642 247789
email: mail@sarabec.co.uk
website: www.sarabec.com

Full system instructions available on our website.
This item carries a 1 year guarantee, please contact your point of sale in the event of any issues.

Sarabec Ltd declares that chimeflash complies with all relevant UK Statutory Instruments.

Sarabec Ltd declares that chimeflash complies with all relevant EU directives.

Sarabec's EU authorised representative: HUMANTECHNIK GmbH, Im Wörth 25, D-79576 Weil am Rhein, Germany.

The full declaration of conformity for the Chimeflash is available from Sarabec Ltd.

The Wheelie bin logo is the industry wide symbol for this type of product. The symbol, when appearing on electronic product, indicates that the item should NOT be treated as ordinary household waste when due for disposal.

